

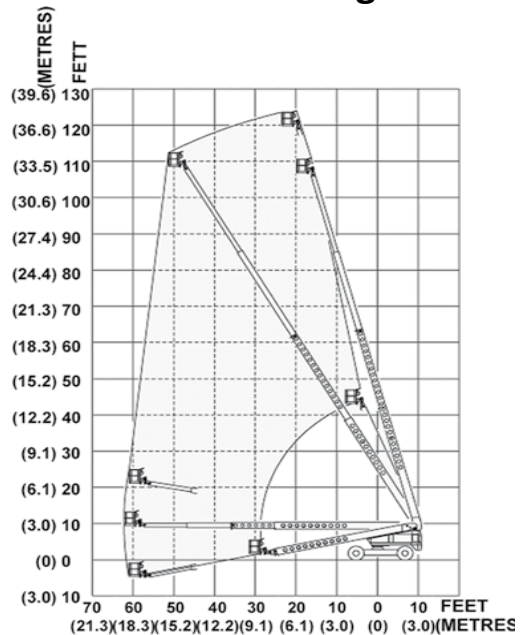
120'

BOOM LIFT

For more information on this equipment or if you require a free onsite inspection, contact our team

1300 36 2666

Range Chart



Specifications

Working height	38.40 m
Max Platform height	36.60 m
Horizontal reach	18.90 m
Platform size	0.76 x 2.34 m
Basket rotation	160 °
Safe working load	227 kg
Turntable rotation	360 ° continuous
Drive speeds high (stowed)	4.80 km/h
Drive speeds mid (stowed)	2.40 km/h
Drive speeds low (mid elevation)	1.20 km/h
Drive speeds creep (extended)	3 mpm
Gradeability	25 %
Turning radius (inside)	6.10 m
Stowed height	3.04 m
Stowed width	2.60 m
Stowed length	12.90 m
Wheelbase	3.70 m
Overall weight (approx.)	17917 kg
Width (axles extended)	3.04 m
Basket rotation	180 °